

DJ2A Technical Information

DJ2A Air Multi Stages Unclamping Cylinder



- Operating pressure (kgf/cm²)
 Have to make sure the operating pressure tolerance to be within $\pm 0.1\text{MPa}$ (1kgf/cm²). Suggest to set the operating pressure for 0.6MPa (6kgf/cm²)
- Unclamping total stroke (mm)
 Total stroke must include the reserved distance between cylinder hitting head and spindle.
- Reserved distance (mm) between cylinder hitting head and spindle.
 The suggested best reserved distance is 0.5mm.
- Total output force (kgf)
 Please reserve the total output force of spindle and plus 20%~30%
- Voltage of solenoid valve
- Use with tool magazine BT30#, BT40#, BT50#
- Push-stroke of spindle (mm)
- Clamping force of spindle (kgf)

Specification:

Operating pressure	Compressed air with 0.4MPa~0.6MPa(4kgf/cm ² ~6kgf/cm ²)
Working temperature range	0°C~60°C
Total stroke	13,15,17
Voltage	DV24, AC110, 220

Scope of application:

- Belt and gear drive spindle. The clamping force of spindle is within 1000KG.
- Under the condition of tool magazine matching, T to T tool change speed can reach 1~1.2 seconds.
- Customers can install a bell accessories to suit the coolant through spindle system.

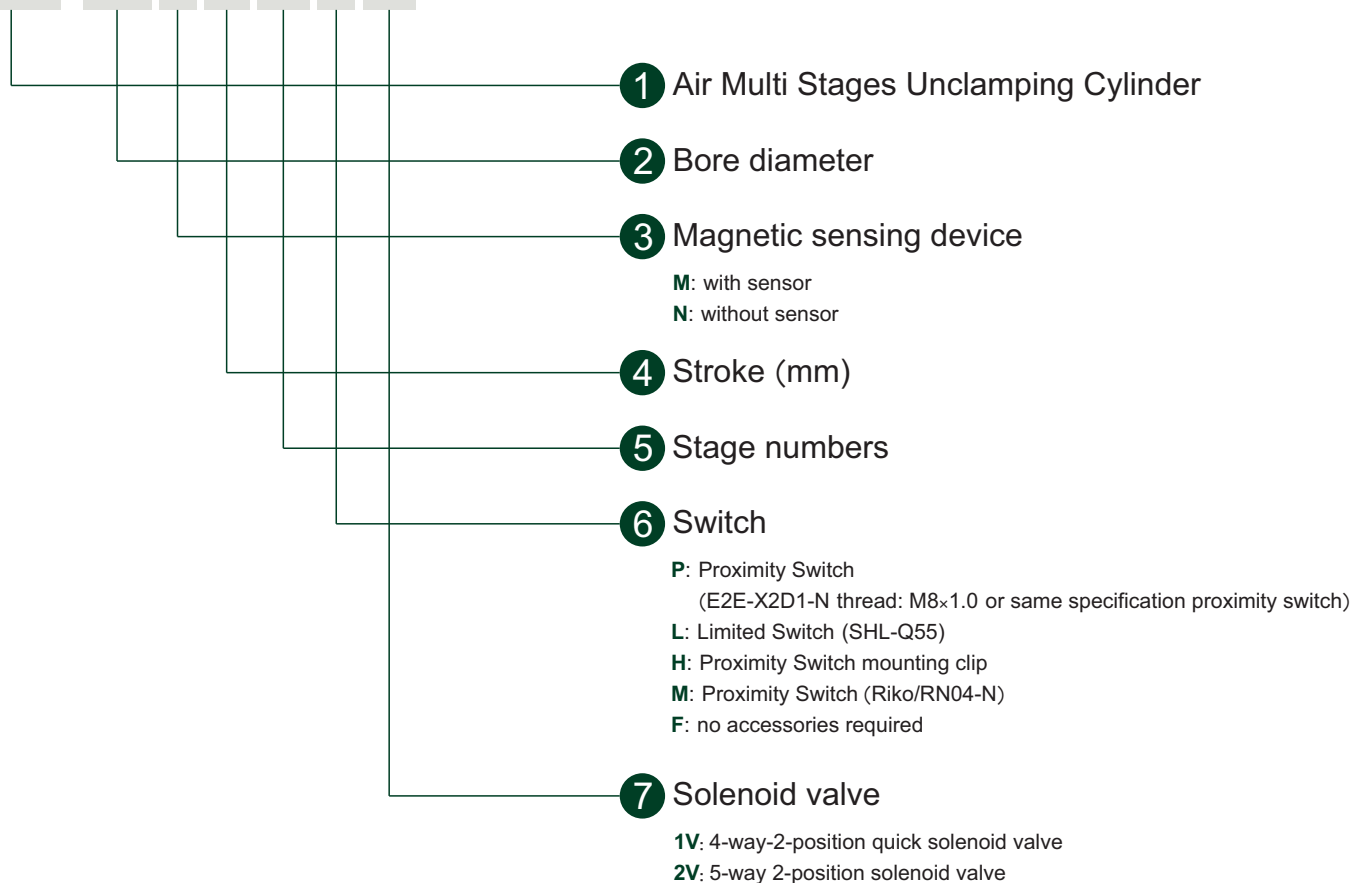
Precautions:

- In order to achieve fast tool changing, the customer must ensure that the air pressure source is sufficient or install a 6L air tank.
- In order to achieve quick tool changing, $\phi 12$ air pressure pipes must be installed in the air inlet and outlet holes.

DJ2A Codification key

Codification key

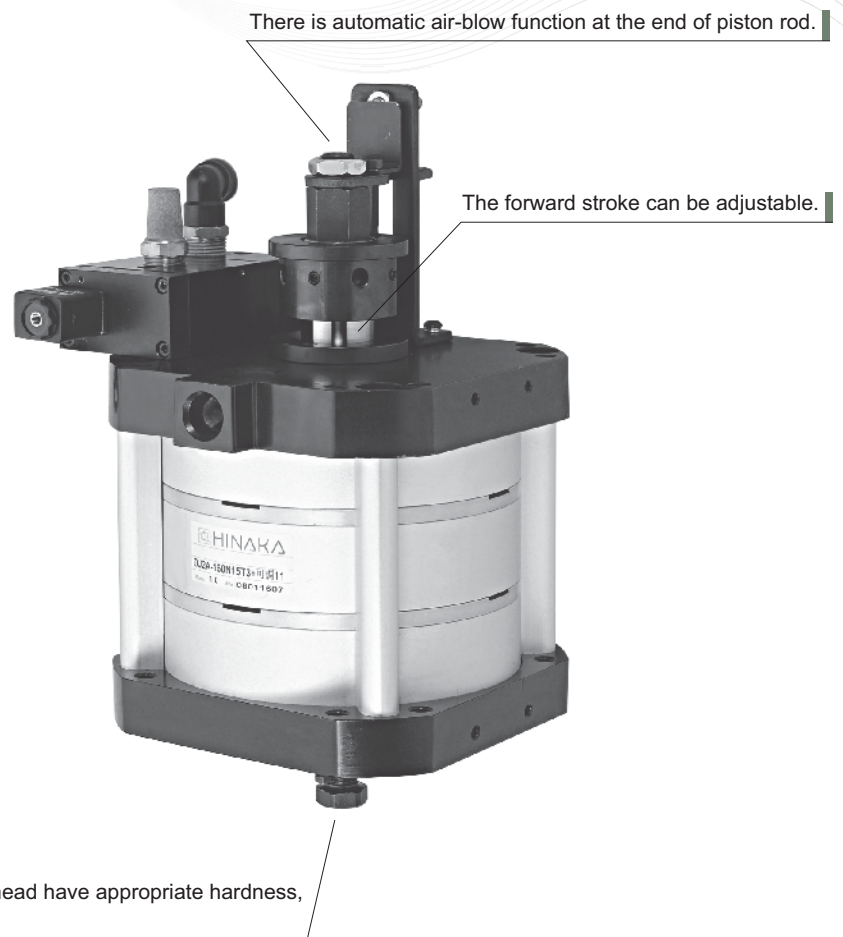
DJ2A - 160 M 15 T3 P 1V



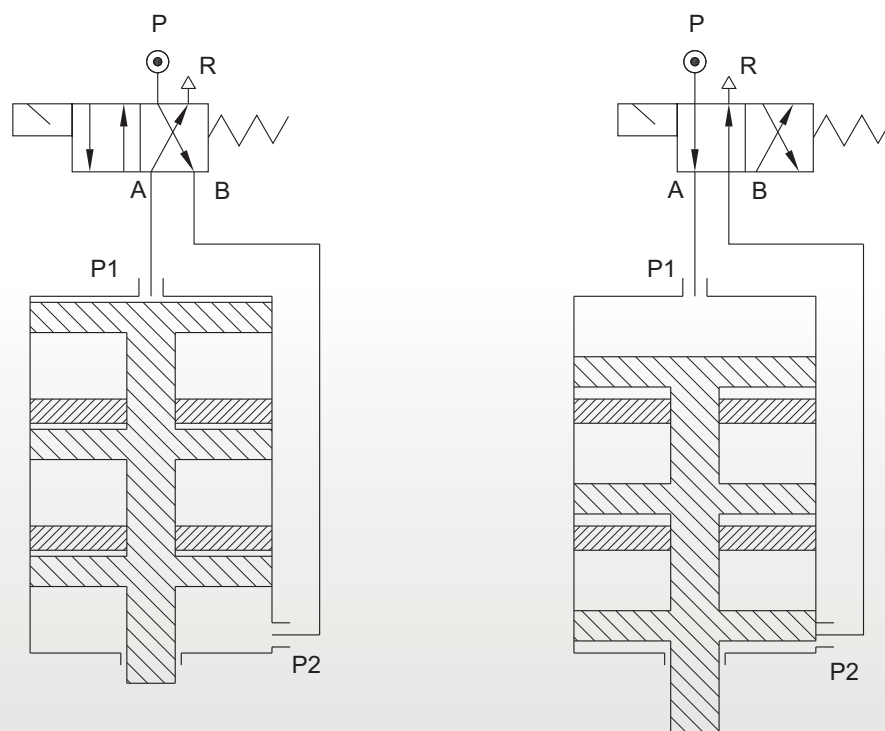
DJ2A Characters / Circuit

Product features:

- Completely driven by air, multi stages to get more output force.
- Suitable for Belt-Drive Spindle and Gear Spindle.
- Direct installation above the spindle for unclamping tool changing.
- With adapter plate, you can interchange DJ2A with BPT (Air-Oil Boosting Unclamping Cylinder).
- Flash tool changing. Tool changing is less than 1 second.
- The control valve of the boosting unclamping cylinder perfectly fits on the rear cover and connects built-in pipe and therefore not only saving the component and assembly cost but also lasting sustained and having great compressed air.
- DJ2A is completely driven by air, no need oil, that can avoid the harm to the high speed spindle bearing due to oil-leakage.

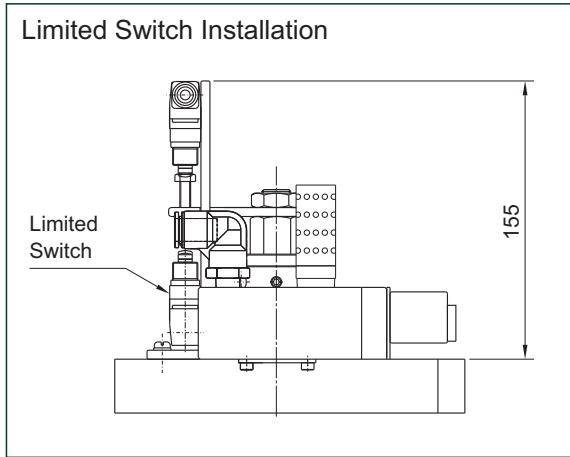


Circuit:

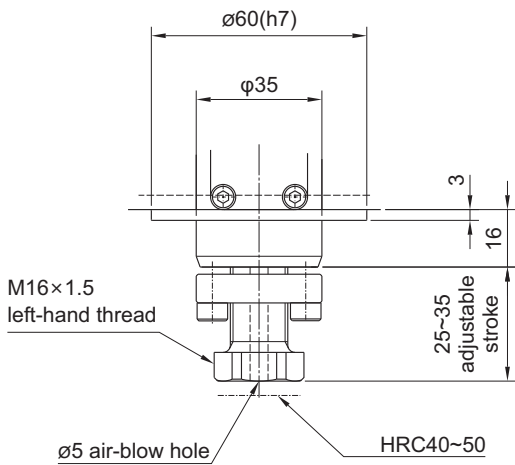
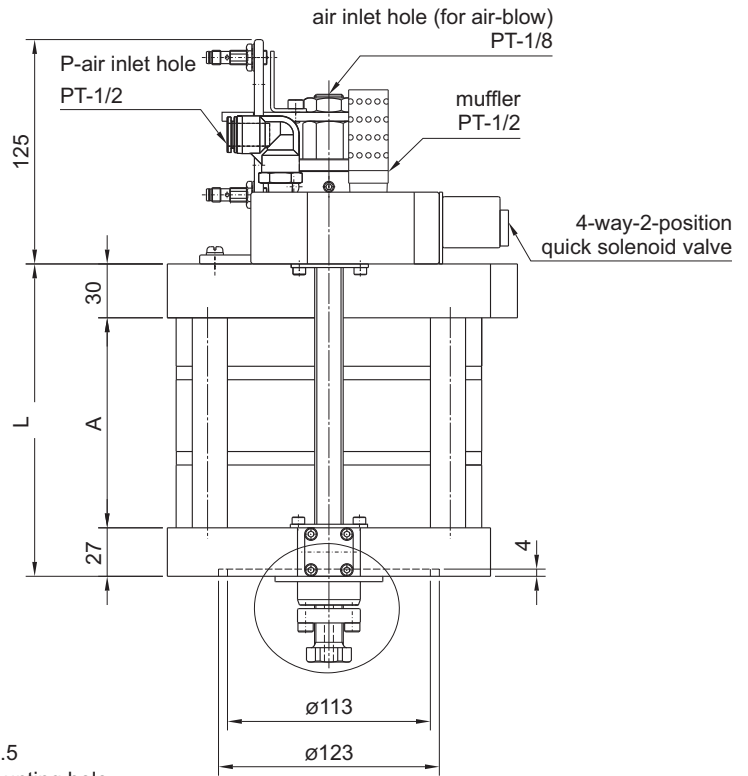




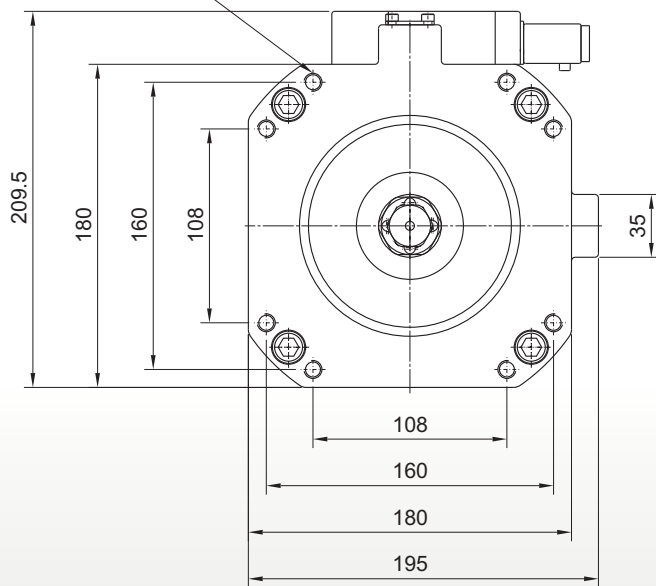
DJ2A Dimension:



Proximity Switch Installation



8-M10×1.5 user's mounting hole



unit: mm

Specifications	A	L	theoretical boosted output force (kgf)		
			4	5	6
2.5T×ST13	66	123	1567	1959	2352
2.5T×ST15	70	127			
2.5T×ST17	74	131			
3.5T×ST13	111	168	2331	2914	3499
3.5T×ST15	117	174			
3.5T×ST17	123	180			
4.5T×ST13	157	214	3095	3869	4646
4.5T×ST15	165	222			
4.5T×ST17	173	230			
5.5T×ST13	202	259	3859	4824	5793
5.5T×ST15	212	269			
5.5T×ST17	222	279			